

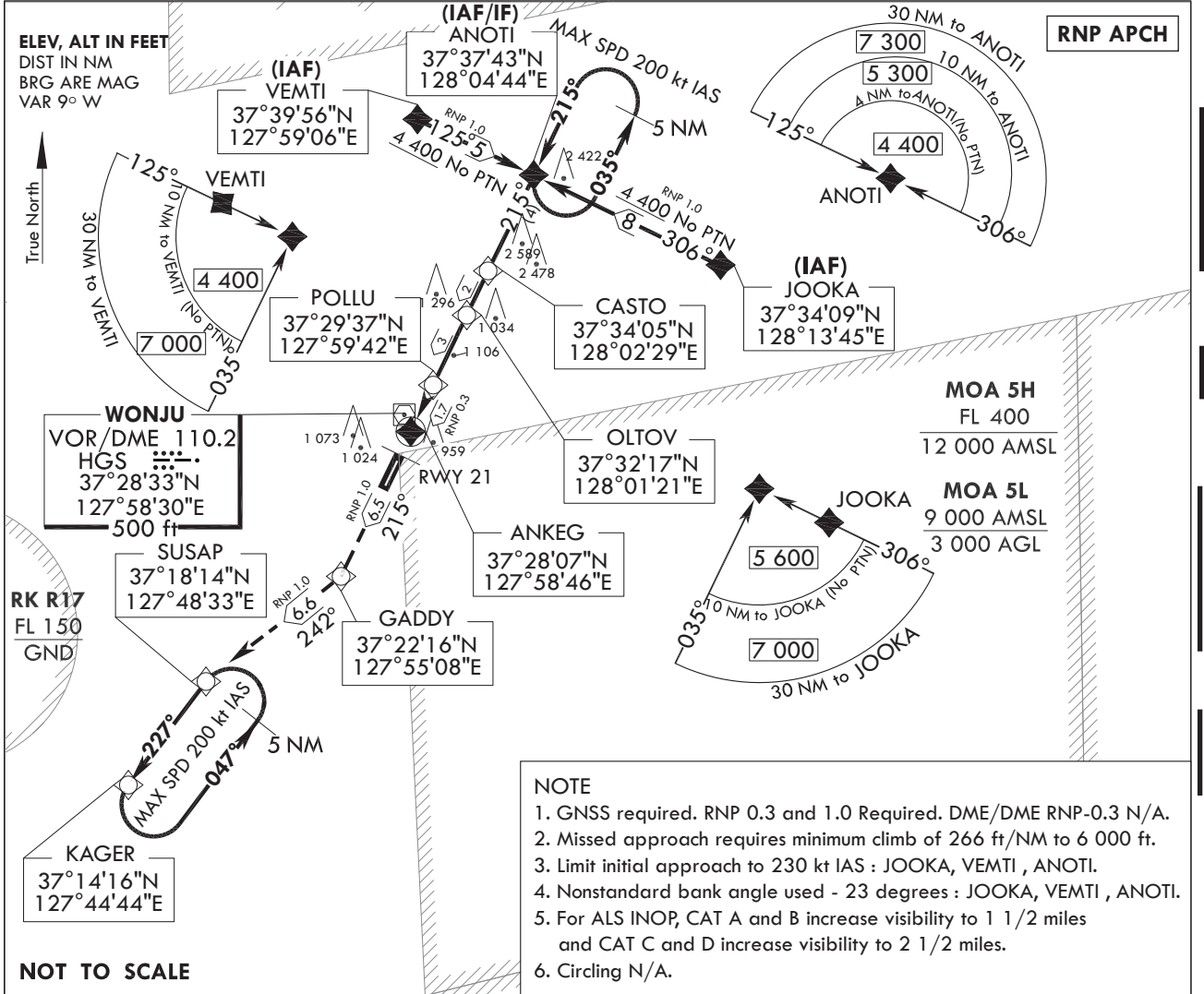
**INSTRUMENT
APPROACH
CHART**

AERODROME ELEV 330 ft
HEIGHTS RELATED TO
THR RWY 21 - ELEV 330 ft

WONJU APP	130.2
	234.4 255.0
WONJU TWR	126.2 118.325
	236.6 265.5

WONJU/Wonju(RKNW)
RNP RWY 21

Note : Approach under U.S TERPS.



NOTE

1. GNSS required. RNP 0.3 and 1.0 Required. DME/DME RNP-0.3 N/A.
2. Missed approach requires minimum climb of 266 ft/NM to 6 000 ft.
3. Limit initial approach to 230 kt IAS : JOOKA, VEMTI , ANOTI.
4. Nonstandard bank angle used - 23 degrees : JOOKA, VEMTI , ANOTI.
5. For ALS INOP, CAT A and B increase visibility to 1 1/2 miles and CAT C and D increase visibility to 2 1/2 miles.
6. Circling N/A.

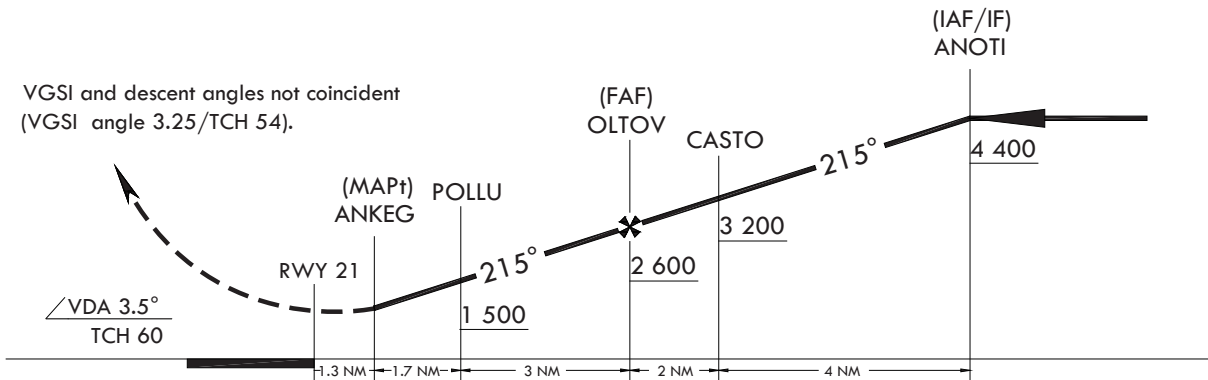
NOT TO SCALE

* VGSI : Visual Glide Slope Indicator
VPA : Vertical Path Angle
TCH : Threshold Crossing Height
No PTN : No Procedure Turn Required

TRANSITION ALT 14 000
TRANSITION LVL FL 140

MISSED APPROACH

Climb to 6 000 ft on track 215° to GADDDY, then track 242° to SUSAP, then track 227° to KAGER and hold.



CATEGORY	A	B	C	D
LNAV/VNAV DA	N/A			
LNAV MDA	1 200/60 870(900-11/8)		1 200-2 870(900-2)	
CIRCLING	N/A			

Change : Information of course/track for instrument approach procedure.

WONJU/Wonju(RKNW)
RNP RWY 21

AERONAUTICAL DATA TABULATION

Instrument Approach Procedure Coding Tables

RNP RWY 21

Serial Number	Path Descriptor	Waypoint Identifier	Fly -Over	Course/Track ° M(° T)	Distance (NM)	Turn Direction	Altitude (ft)	Speed (kt)	Coordinates	VPA /TCH	Navigation specification	Remarks
001	-	JOOKA	-	-	-	-	+5 600	-230	37°34'08.84"N 128°13'45.27"E	-	RNP APCH	IAF
002	TF	ANOTI	-	306(296.5)	8.0	-	+4 400	-230	37°37'42.86"N 128°04'44.26"E	-	RNP APCH	IAF/IF

RNP RWY 21

Serial Number	Path Descriptor	Waypoint Identifier	Fly -Over	Course/Track ° M(° T)	Distance (NM)	Turn Direction	Altitude (ft)	Speed (kt)	Coordinates	VPA /TCH	Navigation specification	Remarks
001	-	VEMTI	-	-	-	-	+4 400	-230	37°39'56.27"N 127°59'05.69"E	-	RNP APCH	IAF
002	TF	ANOTI	-	125(116.3)	5.0	-	+4 400	-230	37°37'42.86"N 128°04'44.26"E	-	RNP APCH	IAF/IF
003	TF	CASTO	-	215(206.4)	4.0	-	+3 200	-230	37°34'05.59"N 128°02'28.87"E	-	RNP APCH	-
004	TF	OLTOV	-	215(206.4)	2.0	-	+2 600	-	37°32'16.91"N 128°01'21.18"E	-	RNP APCH	FAF
005	TF	POLLU	-	215(206.4)	3.0	-	+1 500	-	37°29'37.54"N 127°59'42.09"E	-	RNP APCH	-
006	TF	ANKEG	FO	215(206.4)	1.7	-	1 200	-	37°28'06.75"N 127°58'45.69"E	-	RNP APCH	MAPt

MISSED Approach

Serial Number	Path Descriptor	Waypoint Identifier	Fly -Over	Course/Track ° M(° T)	Distance (NM)	Turn Direction	Altitude (ft)	Speed (kt)	Coordinates	VPA /TCH	Navigation specification	Remarks
001	TF	ANKEG	-	-	-	-	-	-	37°28'06.75"N 127°58'45.69"E	-	RNP APCH	MAPt
002	TF	GADDY	-	215(206.3)	6.5	-	-	-	37°22'16.20"N 127°55'08.33"E	-	RNP APCH	CG 266 ft/NM to 6 000 ft
003	TF	SUSAP	-	242(232.6)	6.6	-	-	-	37°18'14.41"N 127°48'32.66"E	-	RNP APCH	CG 266 ft/NM to 6 000 ft
004	TF	KAGER	-	227(217.6)	5.0	-	6 000	-	37°14'16.30"N 127°44'43.60"E	-	RNP APCH	-

HOLDING Data

Serial Number	Path Descriptor	Waypoint Identifier	Fly -Over	Course/Track ° M(° T)	Distance (NM)	Turn Direction	Altitude (ft)	Speed (kt)	Coordinates	VPA /TCH	Navigation specification	Remarks
001	TF	ANOTI	-	215(206.4)	5.0	L	4 400	-200	37°34'08.84"N 128°13'45.27"E	-	RNP APCH	Hold at DEKIL NE left Turn 214° Inbound 5 NM Leg.
002	TF	KAGER	-	227(217.6)	5.0	L	6 000	-200	37°37'42.86"N 128°04'44.26"E	-	RNP APCH	Hold at KAJAN NE Left Turn 226° Inbound 5 NM Leg.

Change : Information of course/track for instrument approach procedure.

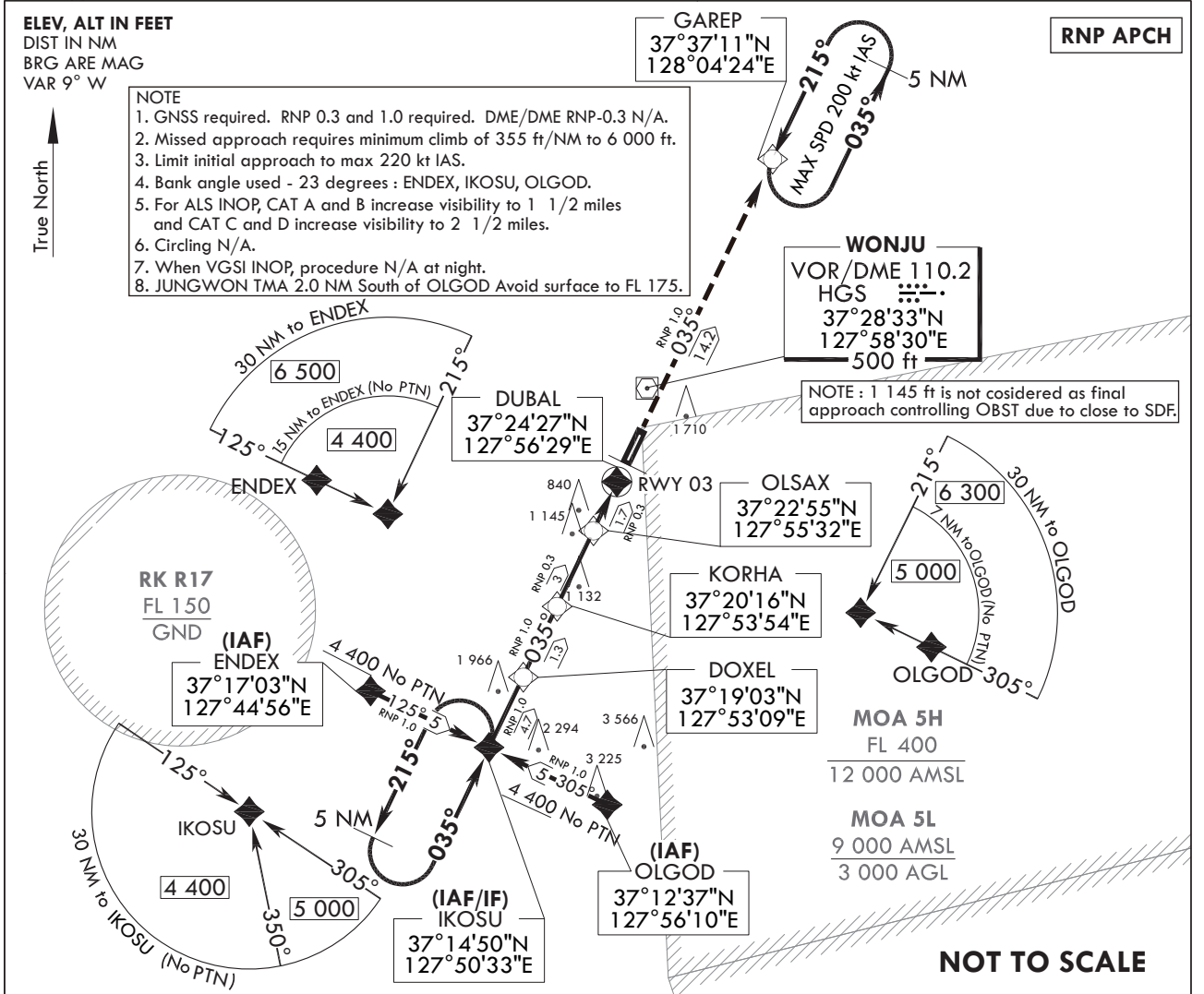
**INSTRUMENT
APPROACH
CHART**

AERODROME ELEV 330 ft
HEIGHTS RELATED TO
THR RWY 03 - ELEV 325 ft

WONJU APP	130.2
	234.4 255.0
WONJU TWR	126.2 118.325
	236.6 265.5

WONJU/Wonju(RKNW)
RNP RWY 03

Note : Approach under U.S TERPS.

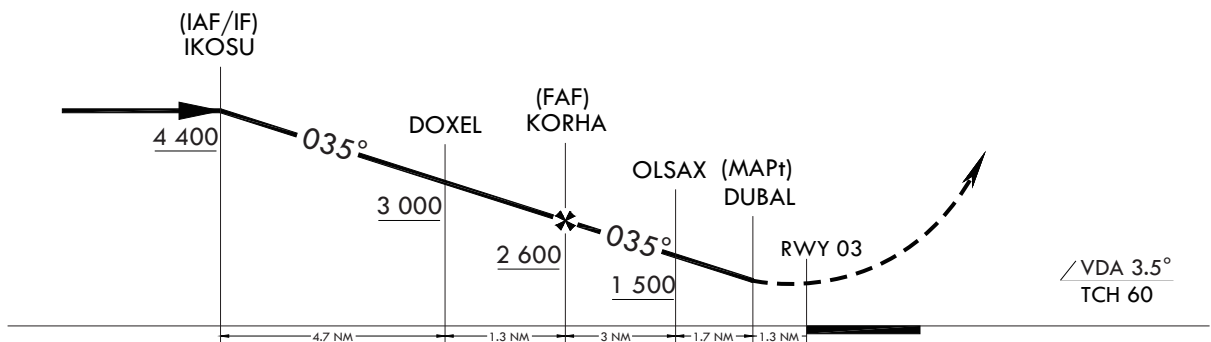


※ VGSi : Visual Glide Slope Indicator
VPA : Vertical Path Angle
TCH : Threshold Crossing Height
No PTN : No Procedure Turn Required

TRANSITION ALT 14 000
TRANSITION LVL FL 140

MISSED APPROACH

Climb to 6 000 ft on track 035° to GAREP and HOLD.



CATEGORY	A	B	C	D
LNAV/VNAV DA	N/A			
LNAV MDA	1 160/60	835(900-11/8)	1 160-17/8	835(900-17/8)
CIRCLING	N/A			

Change : Information of course/track for instrument approach procedure.

AERONAUTICAL DATA TABULATION

Instrument Approach Procedure Coding Tables

RNP RWY 03												
Serial Number	Path Descriptor	Waypoint Identifier	Fly -Over	Course/Track ° M(° T)	Distance (NM)	Turn Direction	Altitude (ft)	Speed (kt)	Coordinates	VPA /TCH	Navigation specification	Remarks
001	-	ENDEX	-	-	-	-	+4 400	-220	37°17'03.21"N 127°44'55.61"E	-	RNP APCH	IAF
002	TF	IKOSU	-	125(116.2)	5.0	-	+4 400	-220	37°14'50.45"N 127°50'32.84"E	-	RNP APCH	IAF/IF
RNP RWY 03												
Serial Number	Path Descriptor	Waypoint Identifier	Fly -Over	Course/Track ° M(° T)	Distance (NM)	Turn Direction	Altitude (ft)	Speed (kt)	Coordinates	VPA /TCH	Navigation specification	Remarks
001	-	OLGOD	-	-	-	-	+5 000	-220	37°12'37.42"N 127°56'09.75"E	-	RNP APCH	IAF
002	TF	IKOSU	-	305(296.3)	5.0	-	+4 400	-220	37°14'50.45"N 127°50'32.84"E	-	RNP APCH	IAF/IF
003	TF	DOXEL	-	035(026.3)	4.7	-	+3 000	-220	37°19'03.51"N 127°53'09.14"E	-	RNP APCH	-
004	TF	KORHA	-	035(026.3)	1.3	-	+2 600	-	37°20'15.88"N 127°53'53.87"E	-	RNP APCH	FAF
005	TF	OLSAX	-	035(026.3)	3.0	-	+1 500	-	37°22'55.32"N 127°55'32.56"E	-	RNP APCH	-
006	TF	DUBAL	FO	035(026.3)	1.7	-	1 160	-	37°24'26.96"N 127°56'29.33"E	-	RNP APCH	MAPt
MISSED Approach												
Serial Number	Path Descriptor	Waypoint Identifier	Fly -Over	Course/Track ° M(° T)	Distance (NM)	Turn Direction	Altitude (ft)	Speed (kt)	Coordinates	VPA /TCH	Navigation specification	Remarks
001	-	DUBAL	-	-	-	-	-	-	37°24'26.96"N 127°56'29.33"E	-	RNP APCH	MAPt
002	TF	GAREP	-	035(026.3)	14.2	-	+6 000	-	37°37'10.88"N 128°04'24.31"E	-	RNP APCH	CG 355 ft/NM to 6 000 ft
HOLDING Data												
Serial Number	Path Descriptor	Waypoint Identifier	Fly -Over	Course/Track ° M(° T)	Distance (NM)	Turn Direction	Altitude (ft)	Speed (kt)	Coordinates	VPA /TCH	Navigation specification	Remarks
001	TF	IKOSU	-	035(026.3)	5.0	L	4 400	-200	37°14'50.45"N 127°50'32.84"E	-	RNP APCH	Hold at MADAE SW Left Turn 034° Inbound 5 NM leg.
002	TF	GAREP	-	035(026.3)	5.0	L	6 000	-200	37°37'10.88"N 128°04'24.31"E	-	RNP APCH	Hold at GAREP NE Left Turn 214° Inbound 5 NM leg.

Change : Information of course/track for instrument approach procedure.

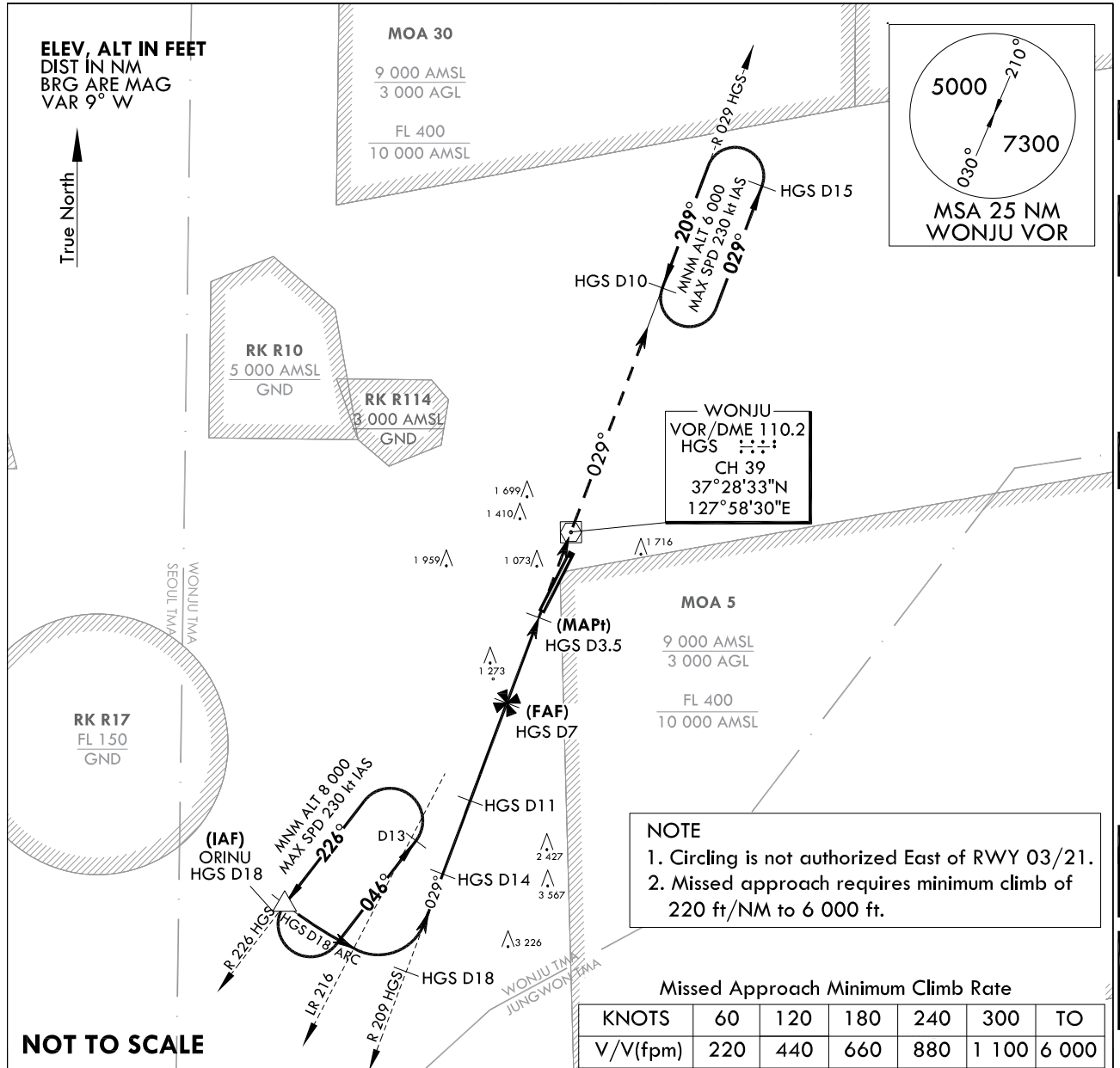
**INSTRUMENT
APPROACH
CHART**

AERODROME ELEV 330 ft
HEIGHTS ELEV TDZ 325 ft

WONJU APP	130.2	234.4	255.0
WONJU TWR	265.5	118.325	236.6
	236.6	126.2	

**WONJU/Wonju(RKNW)
VOR/DME A**

Note : Approach and circle to land under U.S. TERPS.



NOT TO SCALE

NOTE
1. Circling is not authorized East of RWY 03/21.
2. Missed approach requires minimum climb of 220 ft/NM to 6 000 ft.

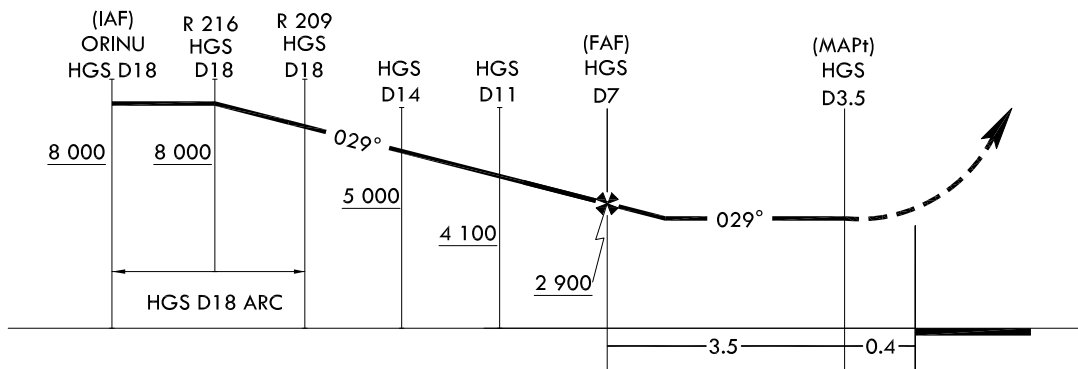
Missed Approach Minimum Climb Rate

KNOTS	60	120	180	240	300	TO
V/V(fpm)	220	440	660	880	1 100	6 000

TRANSITION ALT 14 000
TRANSITION LVL FL 140

MISSED APPROACH

Climb to 6 000 ft via HDG 029° to HGS and R 029 HGS to HGS D10 and hold, continue climb-in-hold to 6 000 ft.



CATEGORY	A	B	C	D	E
CIRCLING	1 540-1 1/4 1 210(1 300-1 1/4)	1 540-1 1/4 1 210(1 300-1 1/2)	1 780-3 1 450(1 500-3)	2 060-3 1 730(1 800-3)	N/A

* EXPANDED CIRCLING APPROACH MANEUVERING AIRSPACE RADIUS

Change : Information of course/track for instrument approach procedure.

INTENTIONALLY

LEFT

BLANK

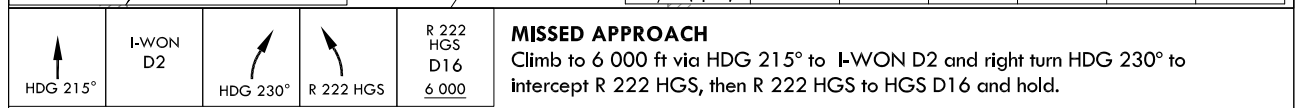
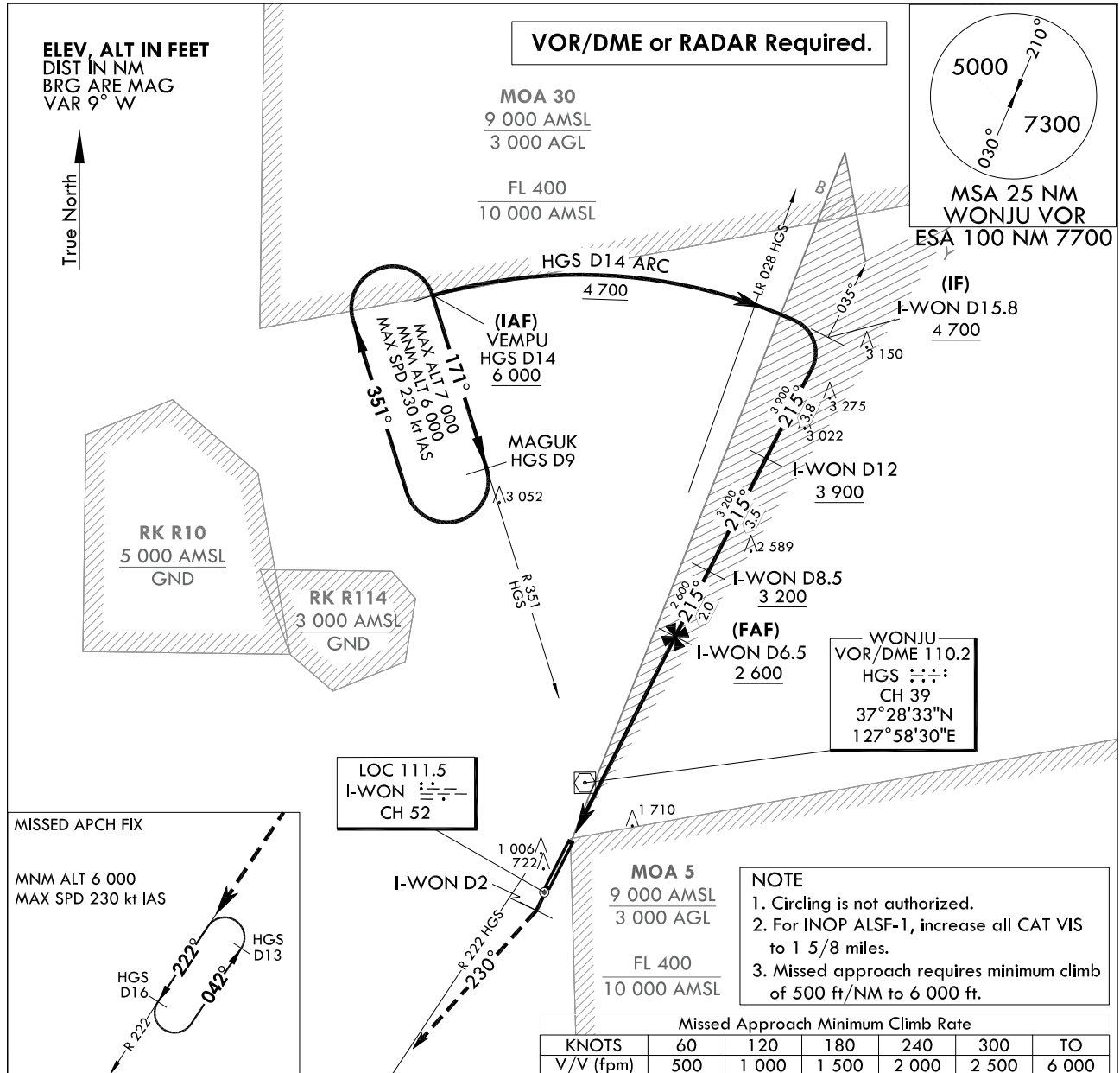
INSTRUMENT APPROACH CHART

AERODROME ELEV 330 ft
HEIGHTS RELATED TO
RWY 21 ELEV TDZ 330 ft

WONJU APP	130.2	234.4	255.0
WONJU TWR	126.2	236.6	265.5

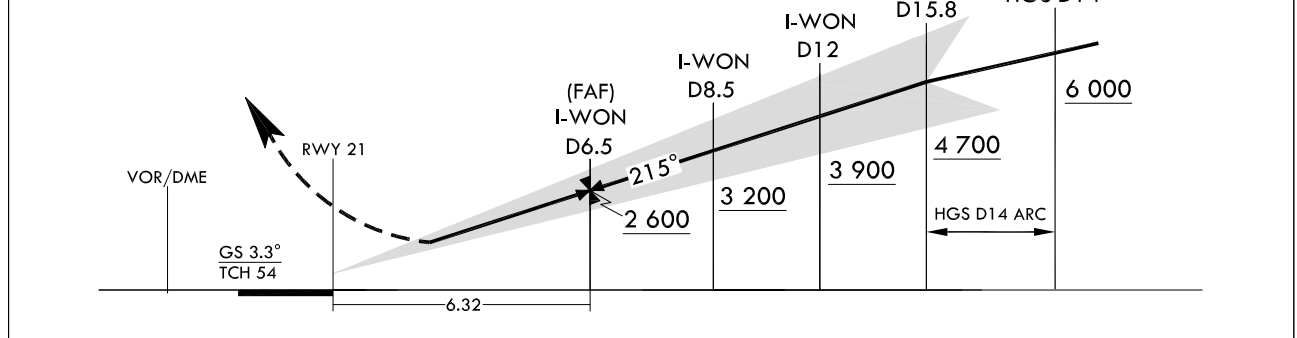
WONJU/Wonju(RKNW)
ILS RWY 21

Note : Approach and circle to land under U.S. TERPS.



NOTE : Use I-WON DME when on the localizer course.

TRANSITION ALT 14 000
TRANSITION LVL FL 140



CATEGORY	A	B	C	D
S-ILS 21		905-1/4	575(600-1 1/4)	

Change : Information of course/track for instrument approach procedure.

INTENTIONALLY

LEFT

BLANK

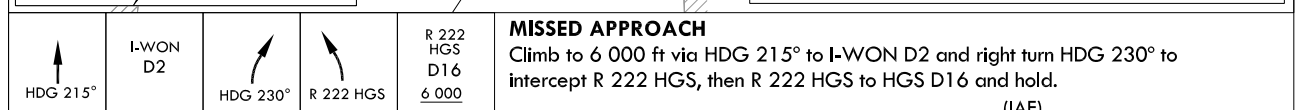
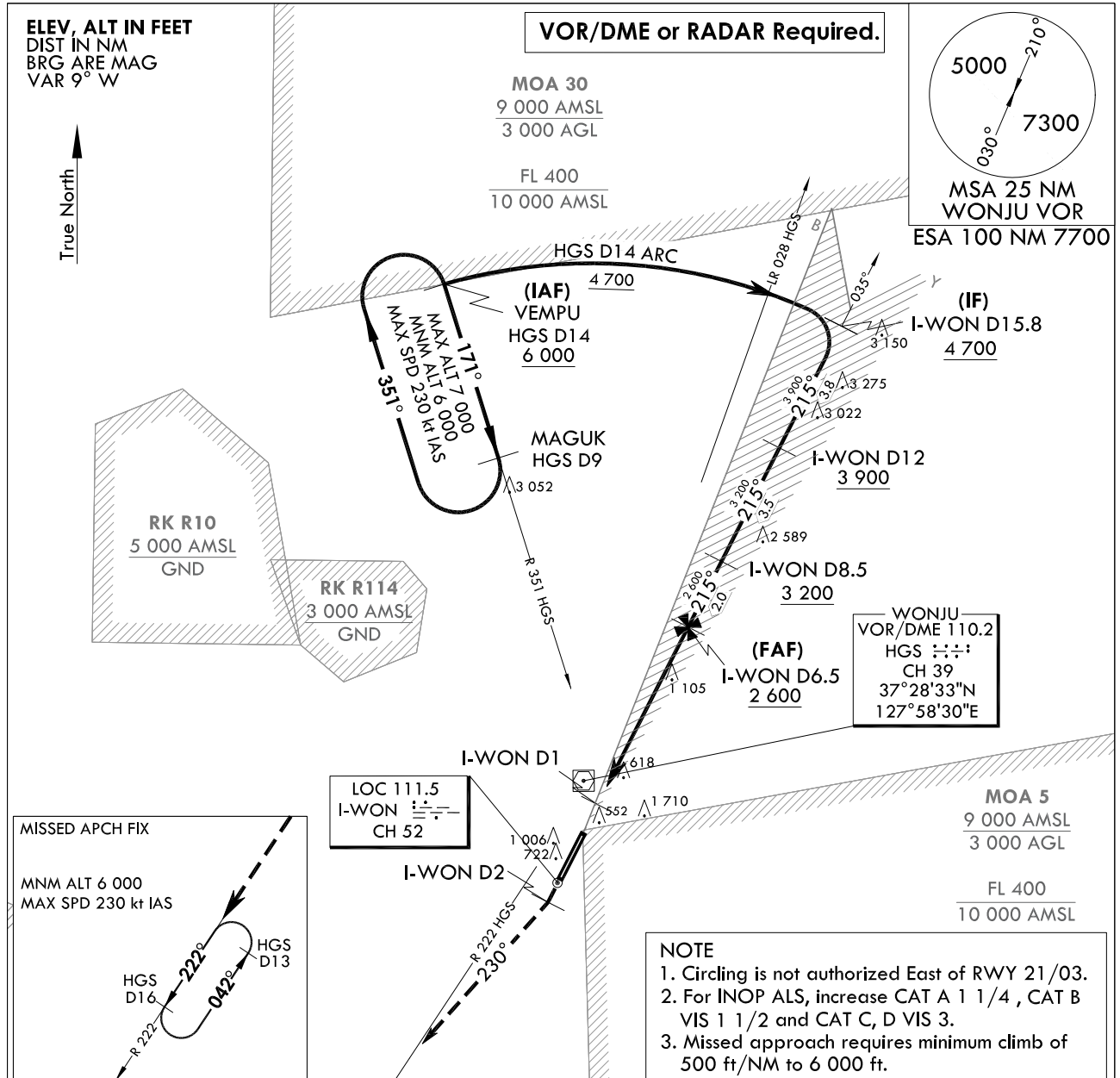
INSTRUMENT APPROACH CHART

AERODROME ELEV 330 ft
HEIGHTS RELATED TO
RWY 21 ELEV TDZ 330 ft

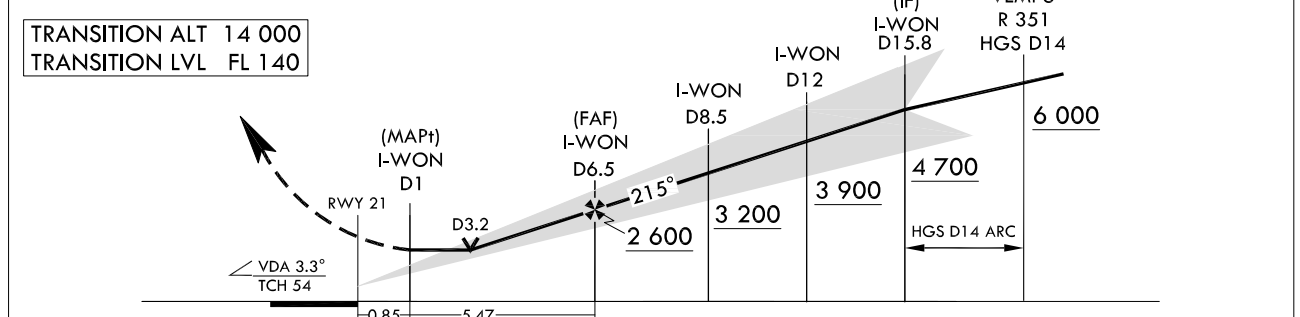
WONJU APP	130.2	234.4	255.0
WONJU TWR	126.2	236.6	265.5

WONJU/Wonju(RKNW) LOC/DME RWY 21

Note : Approach and circle to land under U.S. TERPS.



NOTE : Use I-WON DME when on the localizer course.



CATEGORY	A	B	C	D
S-LOC 21	1 420/40 1 090(1 100-¾)	1 420/55 1 090(1 100-1)	1 420-2½ 1 090(1 100-2½)	
CIRCLING	1 440-1¼ 1 110(1 200-1¼)	1 440-1½ 1 110(1 200-1½)	1 780-3 1 450(1 500-3)	2 060-3 1 730(1 800-3)

Change : Information of course/track for instrument approach procedure.

INTENTIONALLY

LEFT

BLANK

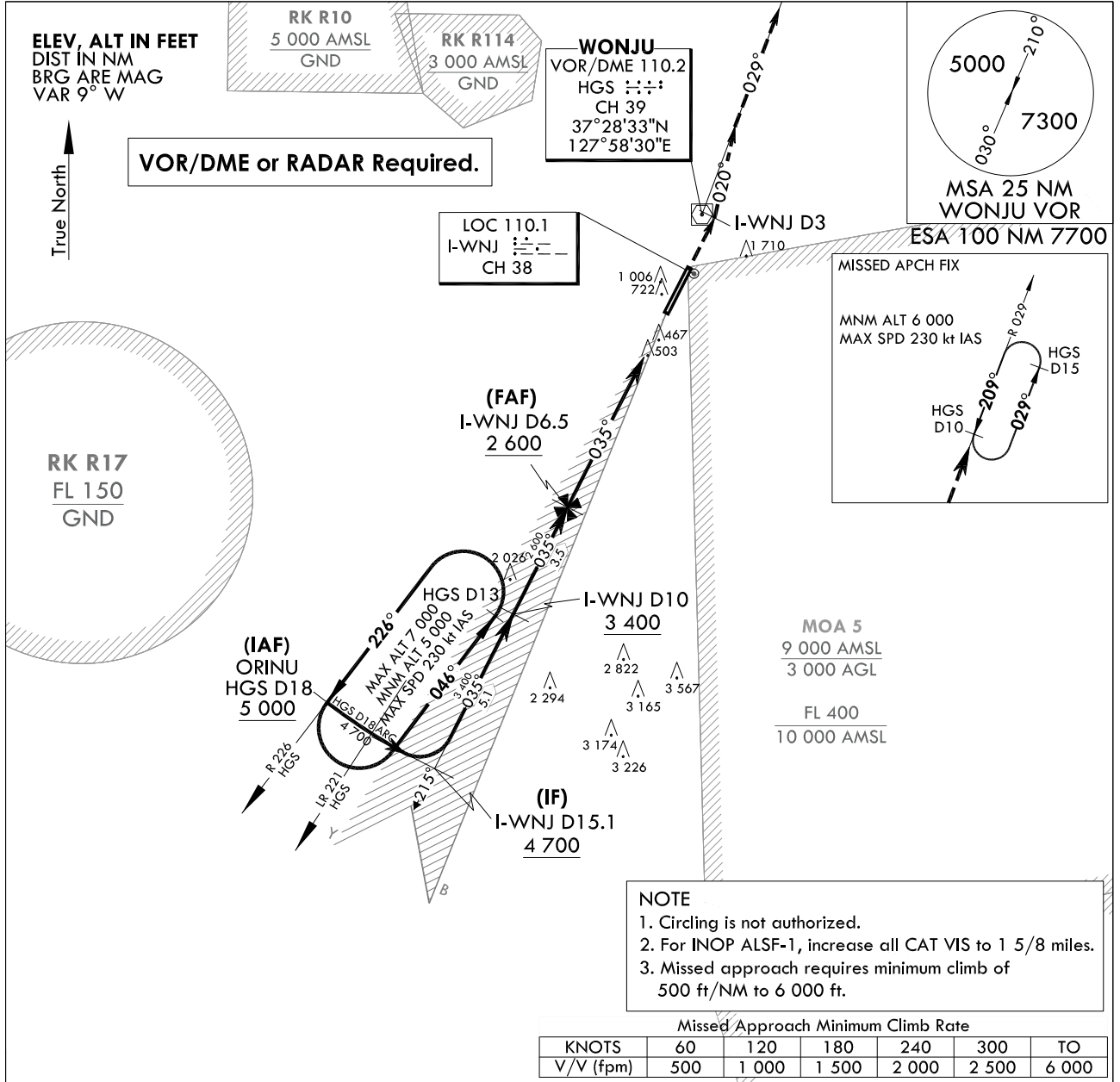
**INSTRUMENT
APPROACH
CHART**

AERODROME ELEV 330 ft
HEIGHTS RELATED TO
RWY 03 ELEV TDZ 325 ft

WONJU APP	130.2	234.4	255.0
WONJU TWR	126.2	236.6	265.5

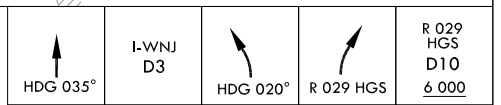
**WONJU/Wonju(RKNW)
ILS Y RWY 03**

Note : Approach and circle to land under U.S. TERPS.



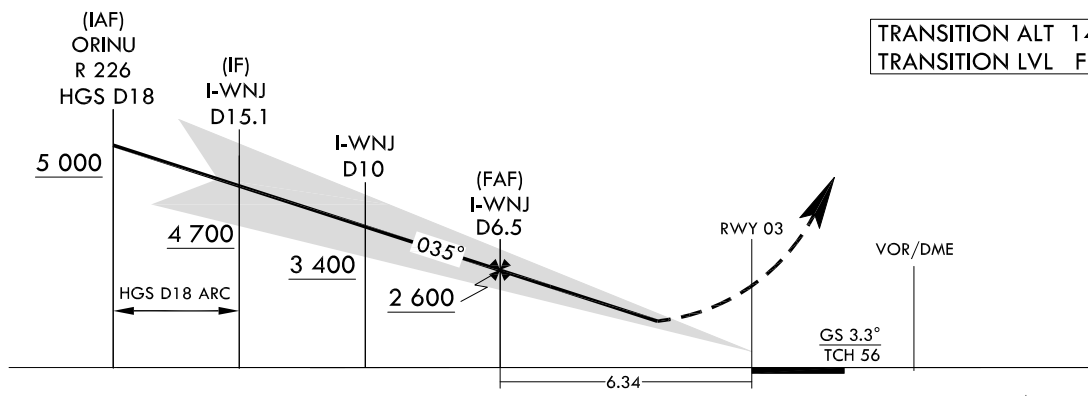
MISSED APPROACH

Climb to 6 000 ft via HDG 035° to I-WNJ D3 and left turn HDG 020° to intercept R 029 HGS, then R 029 HGS to HGS D10 and hold.



NOTE : Use I-WNJ DME when on the localizer course.

TRANSITION ALT 14 000
TRANSITION LVL FL 140



CATEGORY	A	B	C	D
S-ILS 3		872-1¼	547(600-1¼)	

Change : Information of course/track for instrument approach procedure.

INTENTIONALLY

LEFT

BLANK

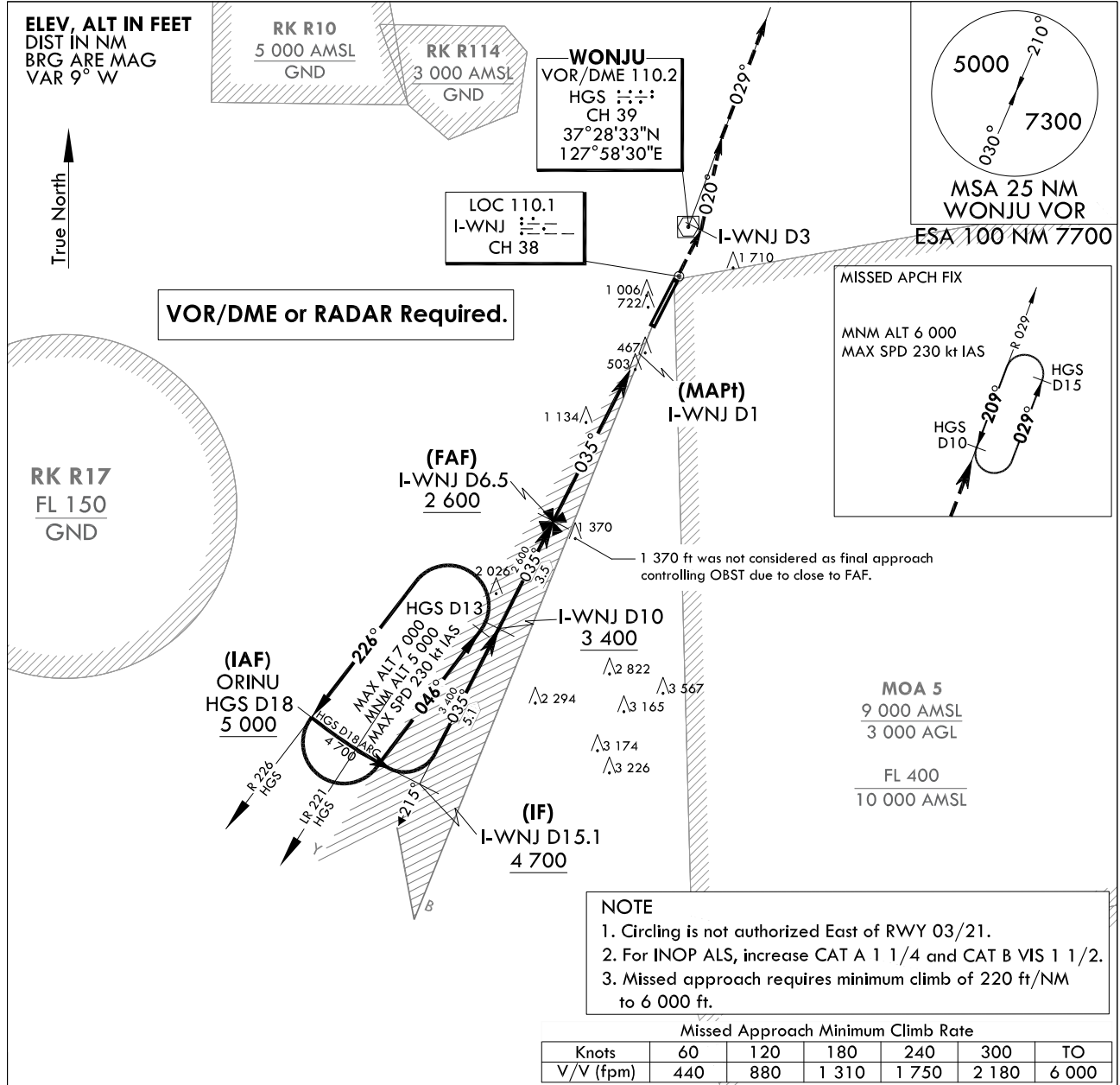
**INSTRUMENT
APPROACH
CHART**

AERODROME ELEV 330 ft
HEIGHTS RELATED TO
RWY 03 ELEV TDZ 325 ft

WONJU APP	130.2	234.4	255.0
WONJU TWR	126.2	236.6	265.5

**WONJU/Wonju(RKNW)
LOC/DME Y RWY 03**

Note : Approach and circle to land under U.S. TERPS.

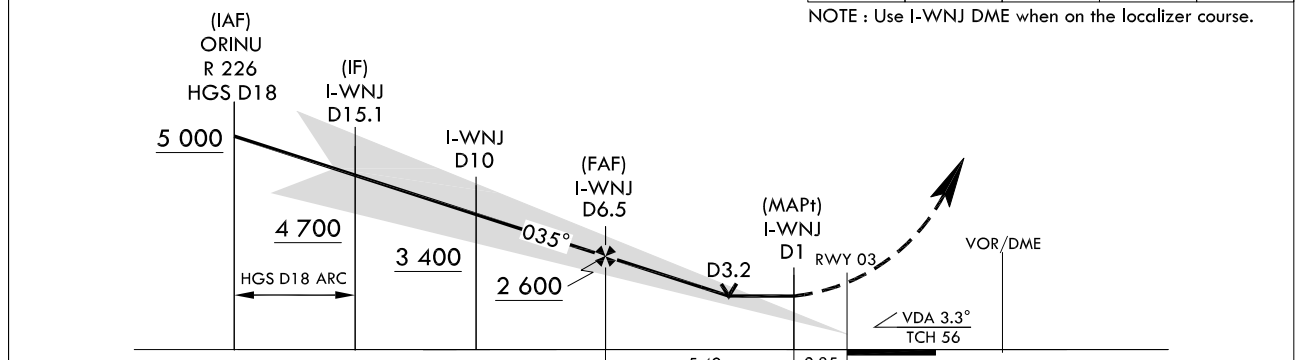


MISSED APPROACH
Climb to 6 000 ft via HDG 035° to I-WNJ D3 and left turn HDG 020° to intercept R 029 HGS, then R 029 HGS to HGS D10 and hold.

**TRANSITION ALT 14 000
TRANSITION LVL FL 140**

↑ HDG 035° I-WNJ D3 HDG 020° R 029 HGS R 029 HGS D10 6 000

NOTE : Use I-WNJ DME when on the localizer course.



CATEGORY	A	B	C	D
S-LOC 3	1 440/40 1 115(1 200-3/4)	1 440/55 1 115(1 200-1)	1 440-3 1 115(1 200-3)	
CIRCLING	1 440-1 1/4 1 110(1 200-1 1/4)	1 440-1 1/2 1 110(1 200-1 1/2)	1 780-3 1 450(1 500-3)	2 060-3 1 730(1 800-3)

Change : Information of course/track for instrument approach procedure.

INTENTIONALLY

LEFT

BLANK